

# Time Switches

## Analog Time Switch

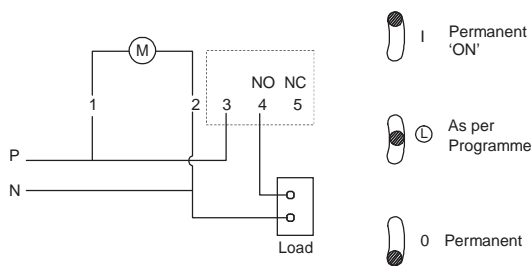
### Type FM/1

- Modular construction
- Power reserve upto 150 hrs
- Inbuilt over-ride facility
- High switching capacity
- Analog and digital versions
- Tamper proof sealing
- 1 set of changeover, 240 V AC, 16 A (resistive)
- Enclosure IP55 with gland plate and locking arrangement



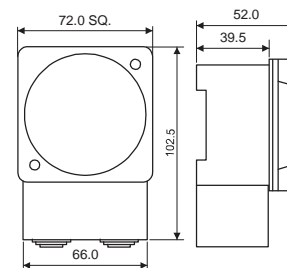
Description	Cat. No.	
	Flush Mounting	Base/DIN rail Mounting
One daily dial 240 V AC - QT	J648F1	J648B1
One weekly dial 240 V AC - QW	J848F1	J848B1
One daily dial 110 V AC - QT	J638F1	J638B1
One weekly dial 110 V AC - QW	J838F1	J838B1
Digital 240 V AC	D847F2	D847B2

### Connection Diagrams

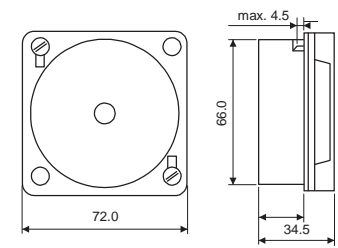


### Overall Dimensions

#### Base/DIN Mounting



#### Flush Mounting



Time Switches		FM1 / QT	FM1 / Digi 20
Supply voltage & frequency		240 V AC, 50/60 Hz	240 V AC, 50/60 Hz
Power consumption		2 VA	4.4 VA
Accuracy		±1.5 Sec / day at 20°C	±1 Sec / day at 20°C
Switching contact		1 C/O contact - AgCdO	1 C/O contact - AgCdO
Contact rating	Resistive	16 A @ 250 V AC	16 A @ 250 V AC
	Inductive (cosφ = 0.6)	8 A @ 250 V AC	4 A @ 250 V AC
	Incandescent lamp	1350 W	1350 W
Shortest switching time	Daily	15 min	1 min
	Weekly	2 hrs	1 min
Power reserve		150 hrs	10 years from factory @ 20°C
Memory locations		NA	20
Ambient temperature		-20°C to 55°C	-20°C to 55°C
Manual over-ride		Provided	Provided
Mounting		Flush, Base/DIN	Flush, Base/DIN
Weight (unpacked)		185 gms (approx)	185 gms (approx)